



LEATHERHEAD  
PARISH CHURCH

MAKING  
HISTORY  
FOR THE NEXT 1000 YEARS



### *Reclaim our medieval church*

Restoring the beautiful architecture, open space and atmosphere of the church's 12th-16th Century origins.

### *Tell our heritage story better*

Promoting imaginative use of technology and collaborative projects with schools, local arts and cultural groups and other nearby attractions.

### *Create buildings fit for 21st Century*

Inspiring the daily use of the church and facilitating projects that make a positive difference to our community.

## *Church Reordering & Building Project*

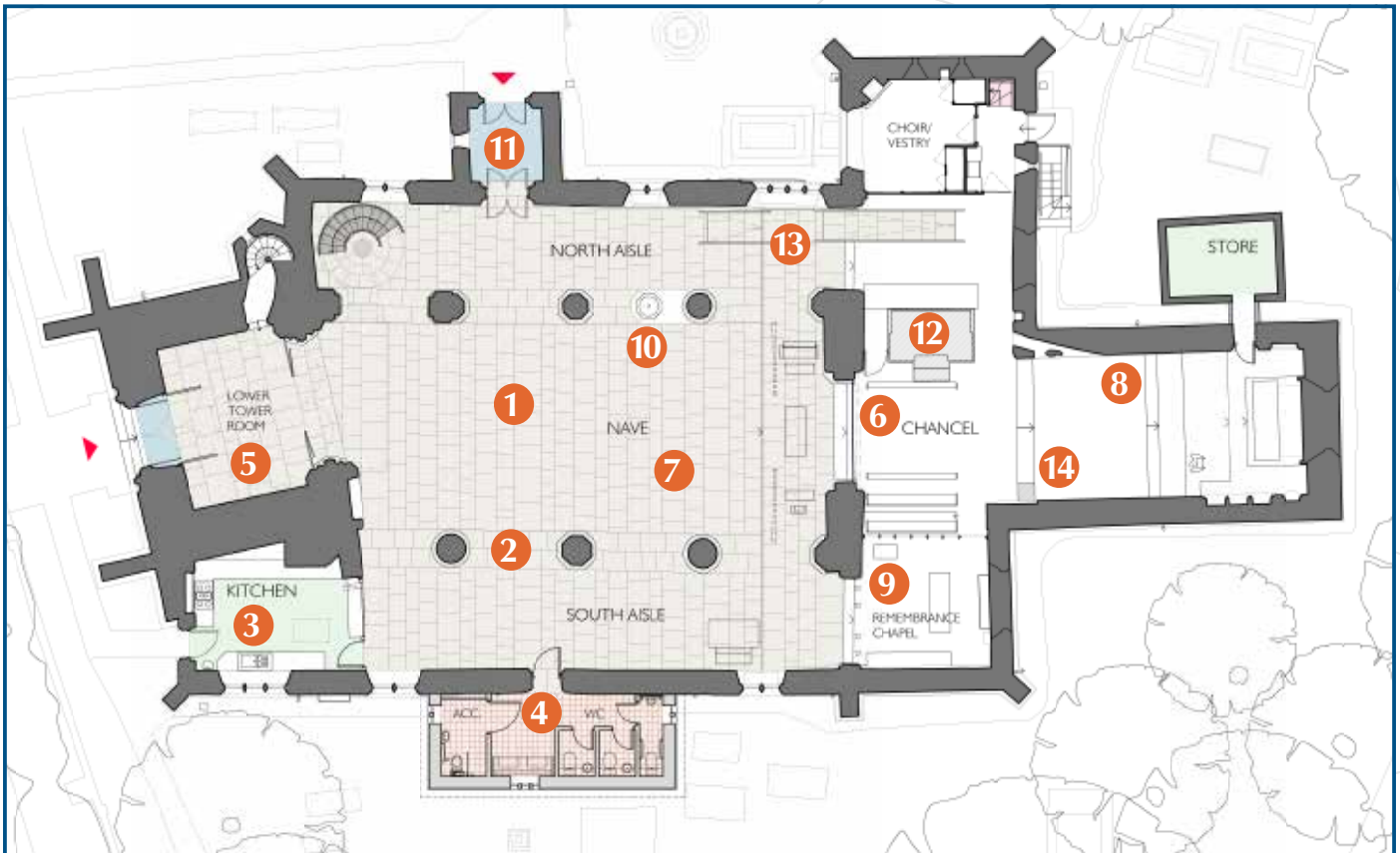
For 1,000 years there has been a church standing at the southern gateway of Leatherhead. Generations of Christians have worshipped here, faithfully serving the local community.

The Making History project will create a more flexible space to facilitate a wider range of community and worship activities in a beautiful historic setting.

Just as medieval churches were the focus for community life: services, festivals, plays, markets and meetings, we seek to restore St Mary and St Nicholas at the heart of our contemporary community.

Vital amenities are planned including: kitchen, toilets, disabled access, heating and lighting necessary to support greater availability and dynamic usage of the church building seven days a week.

# The Proposed Scheme Renovation works



1. A new level stone floor in the nave and aisles to replace wood block flooring that has rot and infestation.
2. Eco-friendly under floor heating to replace an uneconomical Victorian heating system.
3. Installation of kitchen facilities to improve catering and hospitality.
4. Construction of a toilet annexe including baby changing facilities and an accessible toilet.
5. Creation of meeting spaces for children's work and other community activities in the Tower.
6. New lighting, sound and projection facilities.
7. Introduction of flexible seating.
8. Development of heritage media presentation/mobile app.
9. Remembrance Chapel for private prayer and reflection, including the British Legion WW1 war memorial.
10. The Font relocated to aid visibility and emphasise its symbolic importance.
11. Glazed doors to the North Porch to make the entrance more welcoming.
12. Rotate the Parker Organ to enable access to the Chancel by people with restricted mobility and create a unique heritage space for liturgical worship.
13. Ramps to Lower Chancel step and Upper Chancel step improving access for all.
14. The Chancel will be preserved as the focal point of our Medieval and Victorian heritage.

# Detail of Works

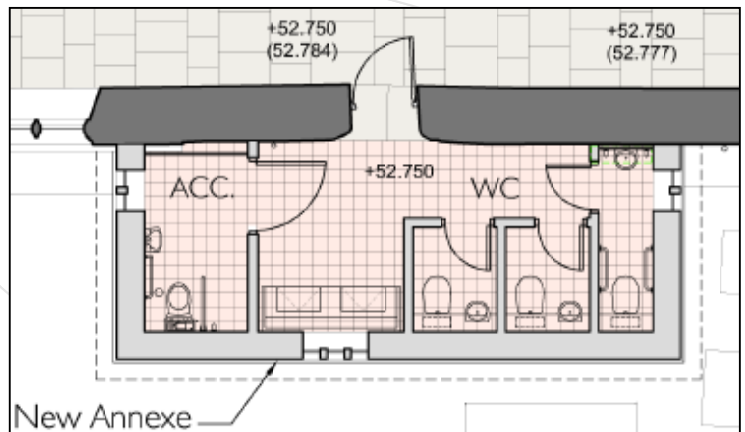
## New Stone Floor and Heating Solution

Jura limestone paving will replace the unsafe rotten, infested woodblock flooring to tower, nave, north and south aisles and chapel. This is more in keeping with the medieval heritage of the church building. A new efficient boiler and eco-friendly under floor heating will be installed replacing the current Victorian pipe heating system.



## Modern Lighting & Electrics

We will strip out all the electrics and old arc lights, installing a new controllable lighting system with low energy LED lights. The system will have programmable lighting scenes to light the church appropriately for every occasion saving time, energy and cost. An additional benefit will be lighting schemes that are more sympathetic to the architecture and better showcase heritage.



## Projection Facilities

A central drop down screen will be located behind the chancel arch to enable contemporary style worship and lectures. The screen will retract out of sight using its own internal motors, activated by remote control.

## High Quality Audio Visual

We will replace the obsolete sound system with a digital audio visual system. This will improve sound quality for worship and facilitate arts performances.

The hearing loop will be maintained.



## Toilet Annexe

The lack of toilet facilities poses a real problem for all who use the building. It is a particular issue for the elderly, people with disabilities and young families with children. In order to grow the potential uses of the church throughout the week we must provide toilets. There is insufficient space within the church building, so we are building an annexe of brick and stone. The roof will be finished in Terne-coated Stainless Steel. It will not extend beyond the Grade II listed table tombs in the churchyard and access will be via a door to be re-instated in the south wall.



6 Modern Lighting & Electrics

6 High Quality Audio Visual Facilities

12

13 Ramps for Accessibility

8

14

Relocated Font 10

11 North Porch : Glazed Doors

7 New chairs offer Flexible Layout

*Roof Space cleaned and waxed*

**9** *Relocated War Memorial & enhanced Remembrance Chapel*

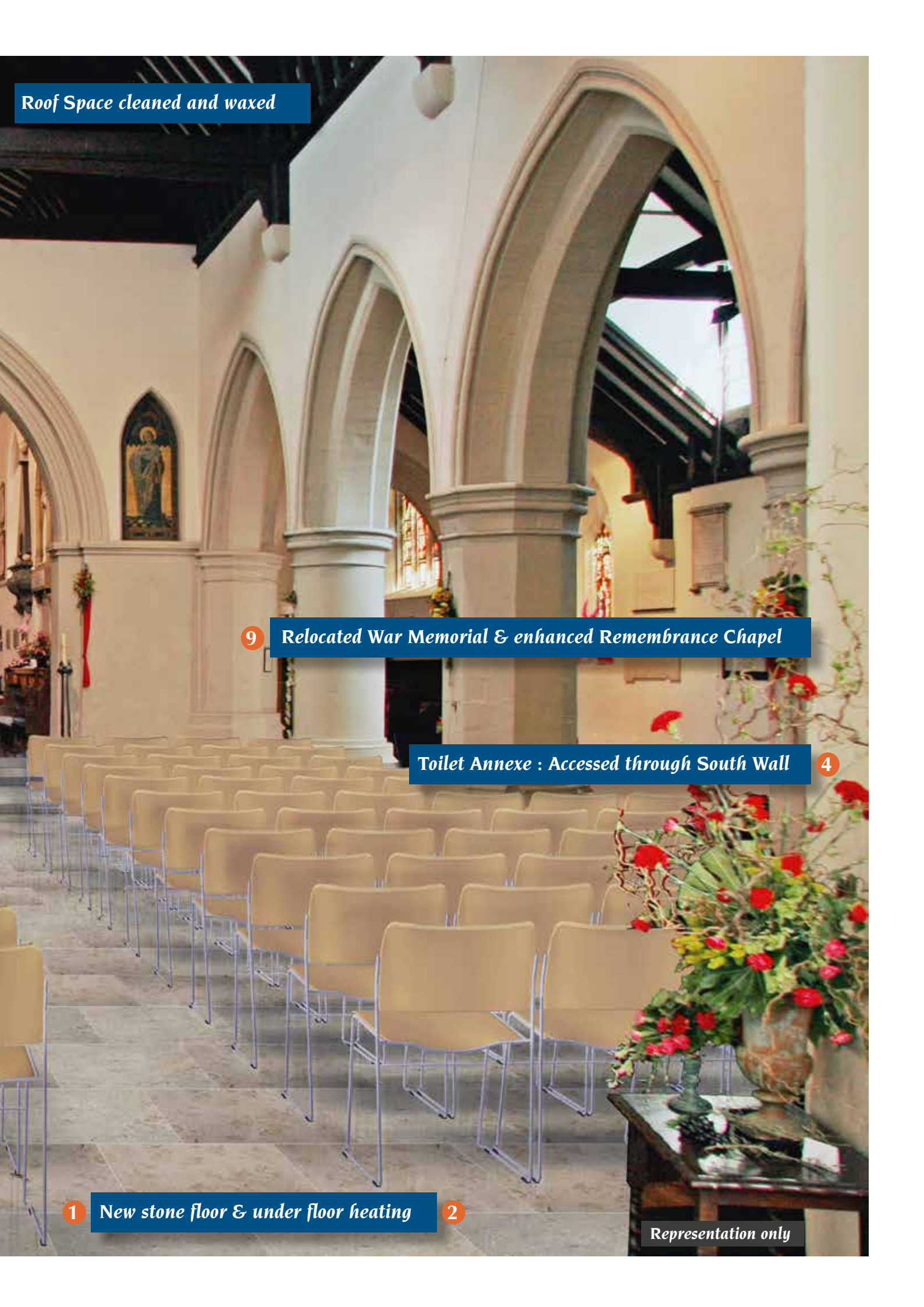
*Toilet Annexe : Accessed through South Wall*

**4**

**1** *New stone floor & under floor heating*

**2**

*Representation only*



### **Glazed Interior Porch Doors**

The church is open during the week, but this is not always obvious. New framed glass doors will make the North entrance more welcoming and enable views of the church even when the inner door is locked.

### **Kitchen Facilities**

Refreshments after the morning service are currently served from an urn located on a trestle table in the nave. We will upgrade these facilities, so that we can provide a wider range of catering. The current Choir Vestry will be turned into a fully functional kitchen, with refrigeration, cooker and dishwasher to cater for larger events. An appropriate door and serving hatch will replace the existing internal door and panelling. The exterior door will provide delivery access. The choir will move to the Lower Vestry in the North Transept.



### **Remembrance Chapel**

Reordering the church provides an opportunity to honour those who are remembered on the British Legion WW1 memorial currently located by the North door. The memorial and altar will be moved to the Lady Chapel, which is already used for personal prayer and reflection throughout the week. This space will be privacy screened by a glass partition, which will incorporate the four gold angels currently around the altar.



### **Flexible Layout**

In order to accommodate a wider range of activities in different formats new seating will comprise of 220 high quality stackable chairs, some with arms. The chairs will be made of chrome with oak back and seat. These have been made available for testing and found to be sturdy and comfortable yet very easy to move and stack. Trolleys will be used to help with rearranging layouts.

### **Accessibility**

*Access for all* has been a design consideration throughout the project. By re-siting the Parker organ, people with restricted mobility will, for the first time, have access to the Lower Chancel, Upper Heritage Chancel and Remembrance Chapel via a glass-sided access ramp. We believe the introduction of an accessible toilet suitable for wheelchair users will enable a wider audience to participate more fully in the life of the church.

### **Roof Space**

While the scaffolding is in place, the ceiling timbers will be cleaned and waxed for conservation purposes. Programmable lighting will make the roof space a more noticeable feature of the church.

### **Improved Decoration**

The church internal walls will be repaired where necessary and the paintwork refreshed. Church windows will also be repaired and draught-proofed where necessary.



## Relocation of Organs

Resiting the restored Georgian Thomas Parker organ is essential to enable access to the Chancel. However, the organ was originally designed as a chamber instrument so the listening experience will improve in its new location. More frequent use for liturgical worship and recitals in this unique heritage space is therefore anticipated. The Allen organ will be moved to the South Aisle. The Chancel step is being remodelled to be a straight step wide enough to accommodate musicians and performers.



## Font

The 15th century font has been moved several times over the life of the church. To emphasise the font's theological importance and greatly aid visibility for baptismal parties, we will relocate it into the nave between the first and second pillars in front of the chancel arch in the North Aisle. Relocation will also enable planned development in the tower.

## Chancel

The rich heritage located in the Chancel will remain undisturbed by the reordering.

## Storage Facility

An old doorway off the Upper Chancel North side will be reinstated to lead to an existing external building that housed the oil storage tank. The building will be roofed, insulated, heated and lit to house the music collection, candles and other items required for use during services.



## Tower Room with balcony and staircase

The imaginative adaptation of church buildings for community use is breathing new life into them. We are going to reintroduce the mezzanine floor that the Victorians removed from the tower in order to create two new rooms. These will be used for crèche and children's activities during services and make beautiful spaces for meetings, exhibitions and showcasing local artisan crafts.

The rooms will be separated from the Nave by glass panelling with glass access doors to the Nave, and on the upper floor to the balcony. The lower room in the Tower will have a glass comfort zone with glass doors to allow the Outer West door to be open yet the building secured.

A highly original swept staircase to the second floor will be a statement of 21st century design. It will be sympathetic to the historic setting and the location of many a family photo at weddings and baptisms.

## Heritage Media Presentation

We propose to develop a variety of multi-media presentations and a mobile app in order to tell our heritage story better to visitors.

## External Works

Aside from the building of the toilet annexe, the surrounding area will be landscaped and all yew trees pruned to re-establish their shape. The Table Tombs near the annexe will be restored.

## How can you help?

The project, including contingency, risk and VAT, has been costed at 1.415m. We have already raised £500,000 and The Friends of Leatherhead Parish Church have pledged additional funds. The project team is applying for funding from a range of trusts and grant-making bodies, but a significant proportion of the finance needs to be raised from within the wider church community to release further sources of funding. Please consider what you can give toward the project in order to achieve our aim of growing a healthy, vibrant church in which lives are transformed and our community enriched.



1 or 2 take-away meals per month



3 café drinks per week







1 bottle of wine a week

*Sacrificing the occasional treat soon adds up to a sizeable annual total! 100 people committing £30 per month equates to £36,000 p.a. That's £45,000 when gift-aided!*

Given the historical and cultural significance of St Mary and St Nicholas Parish church, we will be launching a wider public appeal to local residents and businesses over the Heritage Weekend 2017. Please encourage your friends and family to consider contributing to the fund. This church is part of our local heritage and plays an important role in the local community.

### Connect with Us

 [makinghistory@leatherheadparish.com](mailto:makinghistory@leatherheadparish.com)  
 /leatherheadparish  
 @lheadparish or #MakingHistory1000  
 01372 362544

### Ways to donate

#### Regular Giving

Pledge to give a regular sum weekly, monthly or quarterly over the next 2-3 years. You can do this through the Church of England Parish Giving Scheme or your Employer's Payroll Giving Scheme.

#### One off gift

Making a one off gift will go a long way to helping us get match funding from grant making trusts.

#### Legacy Commitments

No matter how large or small, every legacy gift makes a significant impact on our mission and ministry, and in maintaining our spiritual and cultural heritage. Ask about the Church Legacy Service to simplify this process.

#### Online Giving

Give simply and safely online at:  
<https://mydonate.bt.com>

#### Give as you Shop

Shop through EasyFundraising and generate a free donation to support our initiative.  
<https://www.easyfundraising.org.uk/causes/leatherheadparish>

#### Tax-efficient Giving

If you are a UK taxpayer you can increase your giving (at no additional cost to you) by using the Gift Aid Scheme.

*If you have personal or business connections that you could approach, please, speak to a member of the project team to discuss available donor and sponsorship options.*

#### Still got questions?

*Please speak to Revd. Graham Osborne or visit the church web site.*



LEATHERHEAD  
PARISH CHURCH

Church Road, Leatherhead, Surrey, KT22 8BD  
[www.leatherheadparish.com](http://www.leatherheadparish.com)